

Babu's Retractor

B Surendra Babu¹, B Haritha², B Dasaradhi³, B Radha Ramana⁴

¹Professor & Head, Department of Urology, Rangaraya Medical College, Government General Hospital, Kakinada, Andhra Pradesh, India, ²Post Graduate in General Surgery, Department of General Surgery, M.V.J. Medical College, Bangaluru, Karnataka, India, ³Post Graduate in General Medicine, Department of General Medicine, M.V.J. Medical College, Bangaluru, Karnataka, India, ⁴Director, Haritha Hospital, Kakinada, Andhra Pradesh, India

INTRODUCTION

A new innovation Babu's retractor made for retraction of bladder during ureteric reimplantation, retraction of vessels during arterio-venous fistula, retraction of the pelvis during pyeloplasty and pyelolithotomy.

Variety of retractors for various surgeries are available for various systems including urology. We have invented single stem double end retractor useful for retraction during open surgeries. Surgical retractors are abdominal retractors, eye retractors, gynecology retractors, handheld retractors, laminectomy retractors, pediatric and ribbon retractors, pelvic retractors, rectal retractors, rhinoplastic retractors, self-retaining retractors, skin retractors, surgical retractors, thoracic retractors, tissue retractors, trachea retractors, urological retractors, uvula retractors and vein and nerve retractors. There are totally 135 retractors.

DESCRIPTION

Length: 25 cm. One side right angled non traumatic 5 mm round tip. Other side right angled non traumatic 10 mm round tip.

Material: Stainless steel



Access this article online

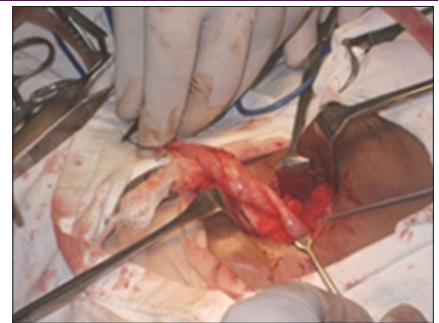


www.ijss-sn.com

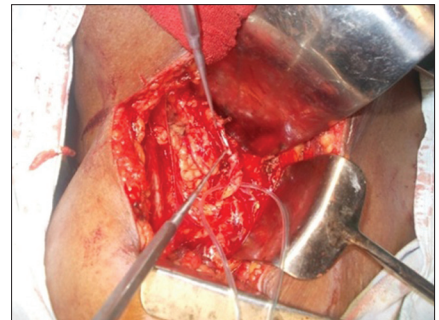
Month of Submission : 12-2014
Month of Peer Review : 01-2015
Month of Acceptance : 01-2015
Month of Publishing : 02-2015

Advantages and Utilisation in Urology

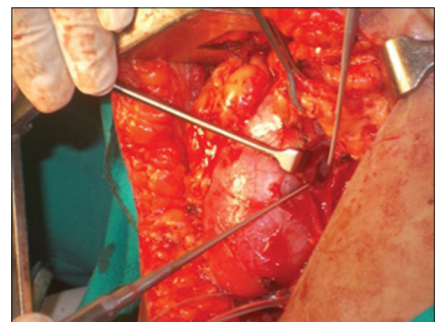
In ureteric reimplantation to retract the bladder



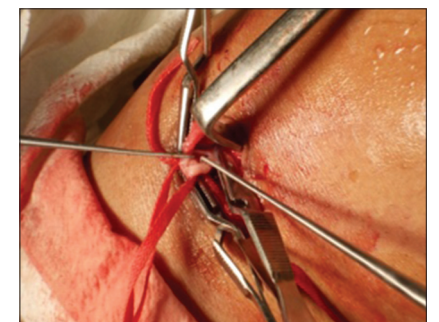
In pyelolithotomy - to retract renal pelvis



In pyeloplasty - to retract the renal pelvis



AV fistula to retract artery and vein



Corresponding Author: Dr. Surendra Babu. B, Professor & Head, Department of Urology, Haritha Hospitals (Multi Speciality), Kakinada - 533 001, Andhra Pradesh, India. E-mail: badamsurendrababu@rediffmail.com

METHODS

This retractor is used in several open surgeries and found most useful in urology.

Disadvantage

It is not malleable.

RESULTS

Their results are excellent and matchless for surgeries

like ureteric implantation, A-V fistulas and during pyelolithotomy and other procedure. It is an excellent tool in retracting fine structures in urology and when surgical space is limited.

CONCLUSIONS

We are using this retractor past 3 years and we found it to be much useful, during fine open surgeries in urology. In other specialities, we have to introduce. It is best neo innovation in urosurgical arnamentorium.

How to cite this article: Babu BS, Hariitha B, Dasaradhi B, Ramana BR. Babu's Retractor. *Int J Sci Stud* 2015;2(11):235-236.

Source of Support: Nil, **Conflict of Interest:** None declared.